

STAINLESS STEEL IS OUR **STRENGTH**



AUTODESK[®] INVENTOR[®]

Installing Stalatube profiles for Autodesk Inventor

Download 3D-library files from link below:

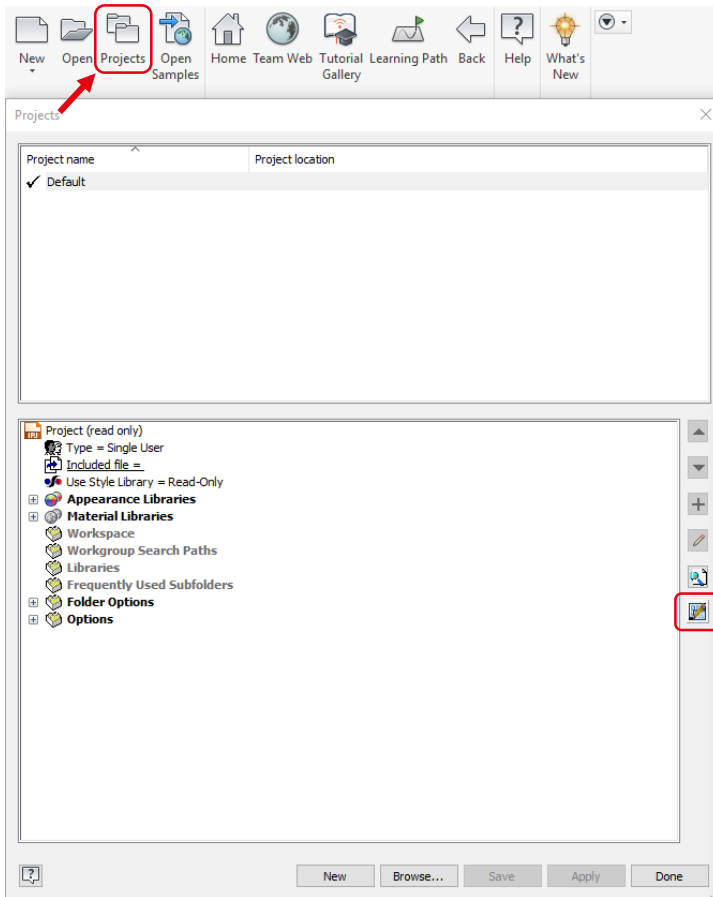
<https://www.stalatube.com/stainless-steel-design-tools/>



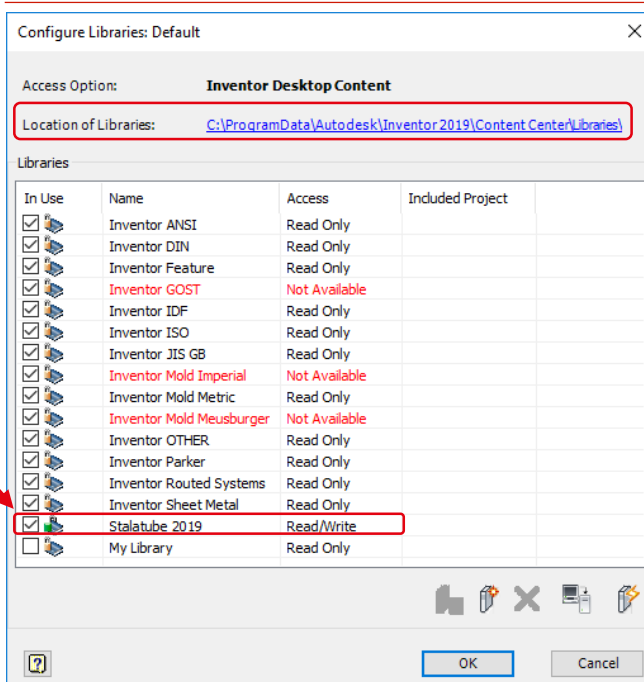
Extract file to your
Inventor library location
(see next page)

STALA
TUBE

STAINLESS STEEL IS OUR STRENGTH



From Inventor choose:
Projects → Choose that
project you want to add
profiles → Configure
Content Center
Libraries..



If the file was extracted to
library location, the Stalutube
library should be visible on
this list.

Your location of the libraries
is seen on top of this window.

To add Stalutube library to
this project, just check the
box on the left side of library
name. Proceed to OK → Done

STAINLESS STEEL IS OUR STRENGTH

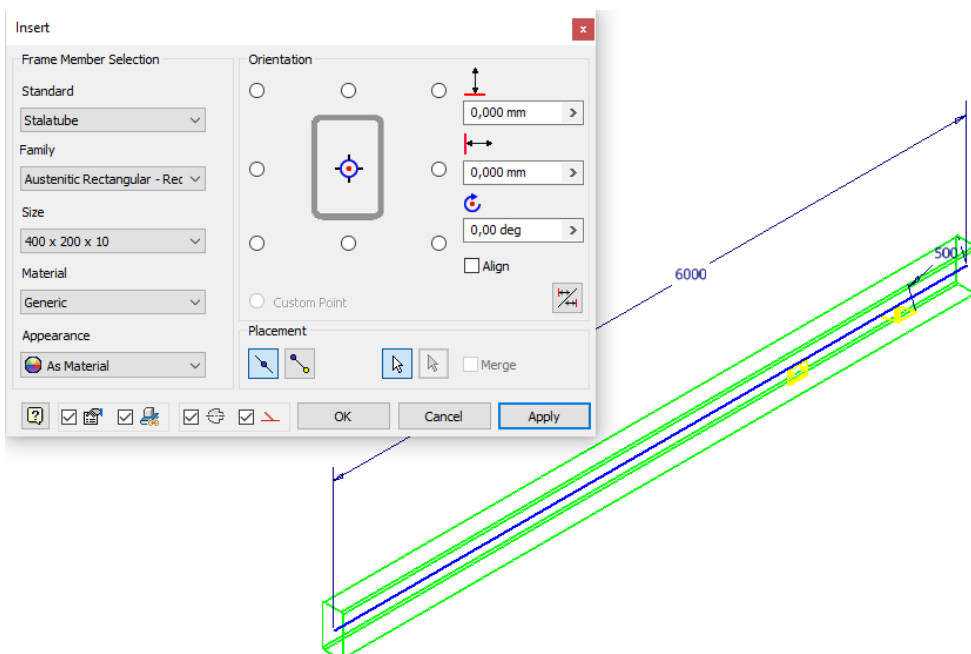
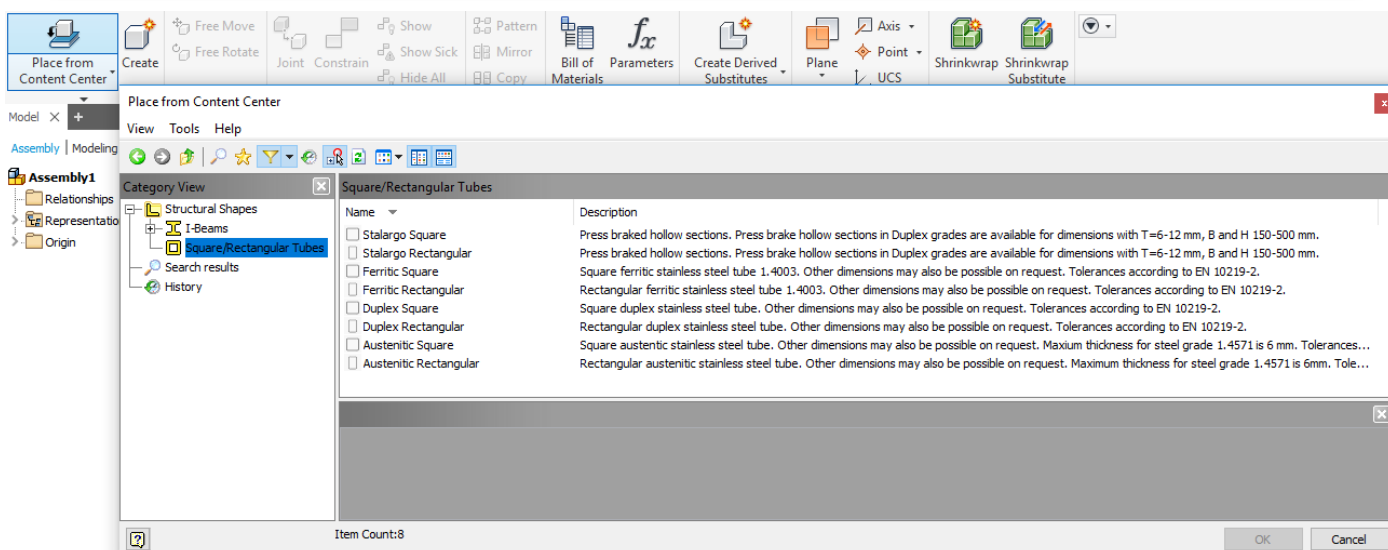
Usage of Stalatube profiles

Stalatube profiles can be used either from Content Center of Frame Generator

At assembly you can choose Content center:

Square/Rectangular Tubes and choose the preferred profile.

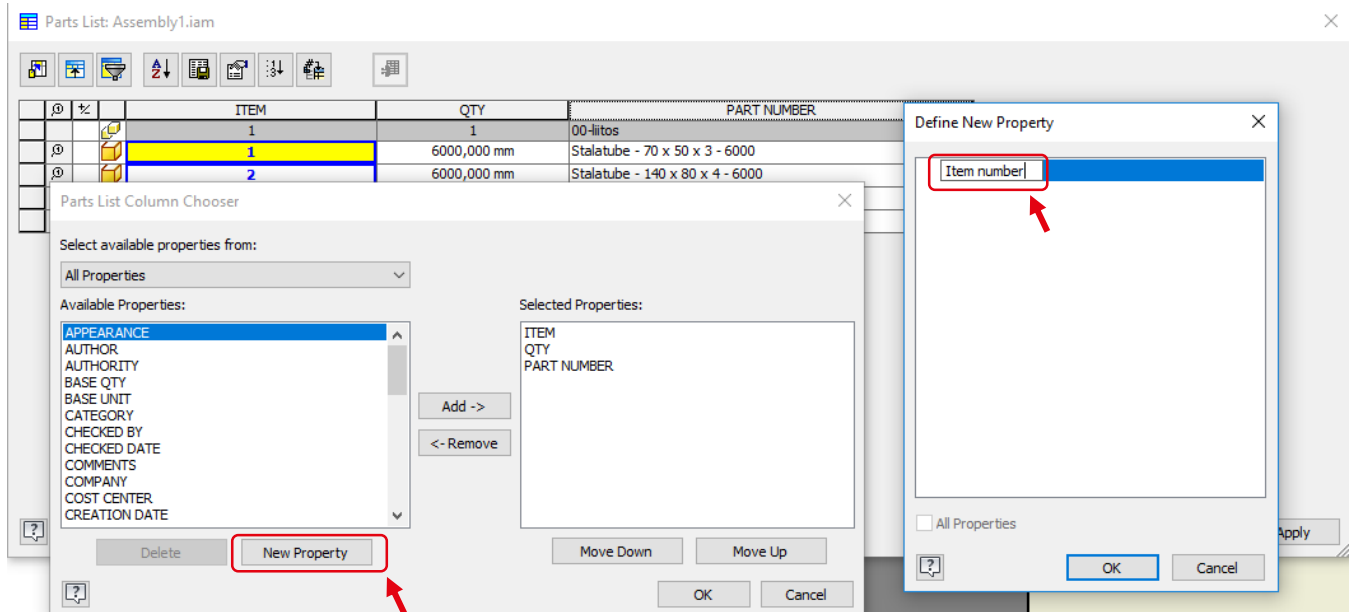
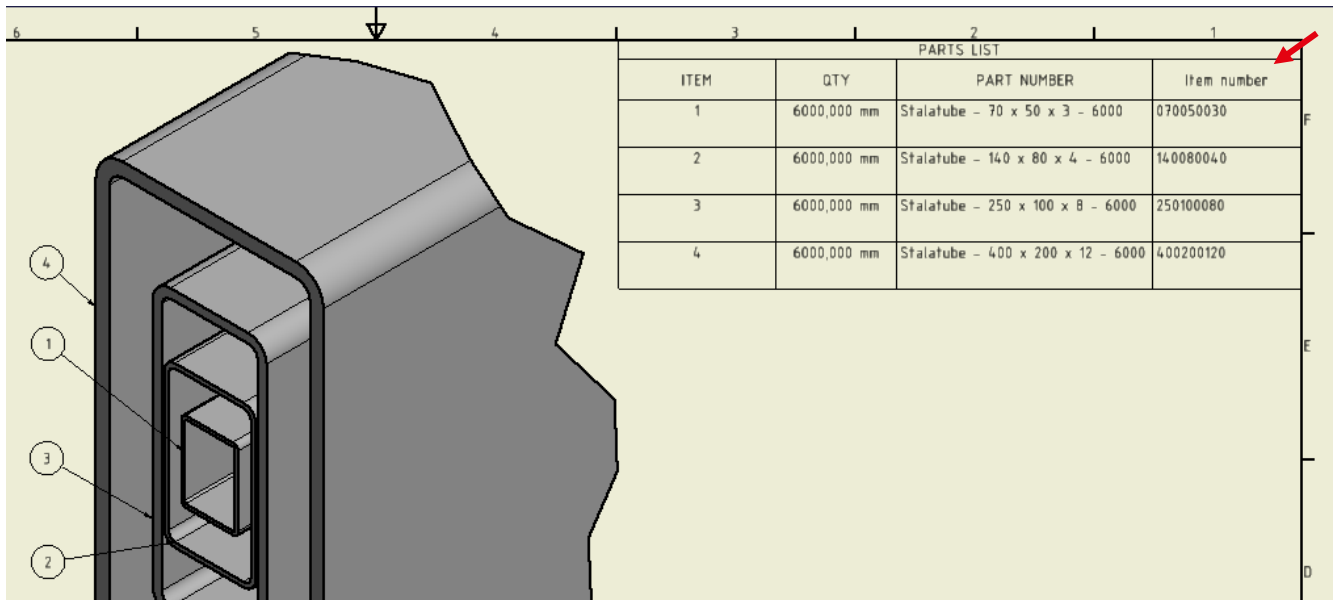
To find Stalatube profiles easier, filter content and choose Stalatube as a manufacturer.



From Frame Generator choose Stalatube as the standard and then you are able to choose the preferred profile.

STAINLESS STEEL IS OUR STRENGTH

Assembly drawings



Notice that our item number for ordering is found under property name: Item number

If the property is not visible, add a new property from Parts list column chooser.